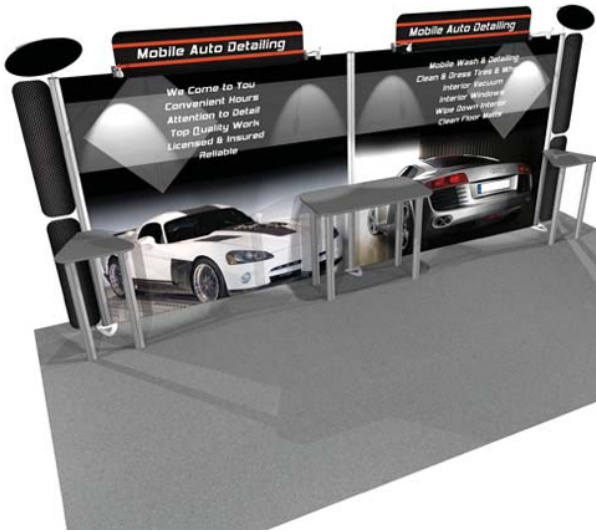


Linear 10 x 20

The Linear Back Wall Display System provides the looks, style and sophistication of a semi-custom exhibit with the ease, convenience and value for money trade price that you're looking for. The Linear range of portable exhibits is designed to ship with minimal lead time and is a terrific "off the shelf" solution for trade shows and semi-permanent displays.

Features & Benefits

- Low profile design conserves booth space.
- Sturdy aluminum frame construction and steel foot provide stability.
- Your choice of standard table top colors compliments your booth decor.
- Built to accommodate add on accessories so you can diversify your display.
- Standardized kits allow for quick shipping.
- Installation tool included.



Hardware Specifications

Graphic Dimensions

Please use available templates when setting up artwork.

Additional Info

KIT K/L/M/N/O/R/S:
97.75"(t) x 24.5"(d) x 223.25"(w)
2483mm(t) x 622mm(l) x 5671mm(w)

KIT P/Q:
97.75"(t) x 19"(d) x 223.25"(w)
2483mm(t) x 483mm(l) x 5671mm(w)

KIT T:
97.75"(t) x 16"(d) x 223.25"(w)
2483mm(t) x 406mm(l) x 5671mm(w)

Center Graphic
Total Size: 94.77"(w) x 85"(h)
2407mm(w) x 2159mm(h)
Trim Size: 93.77"(w) x 84"(h)
2382mm(w) x 2137mm(h)
Each Panel: 46.866"(w) x 84"(h)
1190mm(w) x 2137mm(h)

Header:
Total Size: 62"(w) x 14"(h)
1575mm(w) x 356mm(h)
Trim Size: 61"(w) x 13"(h)
1549mm(w) x 330mm(h)
(Separated in half vertically)

Left & Right Top Wings:
Total Size: 11"(w) x 42.5"(h)
279mm(w) x 1080mm(h)
Trim Size: 10"(w) x 41.5"(h)
254mm(w) x 1054mm(h)

Left & Right Bottom Wings:
Total Size: 11"(w) x 41.5"(h)
279mm(w) x 1054mm(h)
Trim Size: 10"(w) x 40.5"(h)
254mm(w) x 1029mm(h)

Total Shipping Weight:
245lbs / 111.13kg

Ships in 4 cases
Each:
50"(l) x 28"(w) x 12"(d)
1270mm(l) x 712mm(w) x 305mm(d)

We are continually improving and modifying our product range and reserve the right to vary the specifications without prior notice. All dimensions and weights quoted are approximate and we accept no responsibility for variance. E&OE.



Joining Bar



Corner Mount
1. Mount Bracket
2. Mount Covering
3. Mount Screw



Installation Tool



Square Table Top



Triangle Table



Rectangle Table



42" Side Pole Section with Steel Foot



42" Side Pole Section



36" Leg



42" Center Pole Section



46" Cross Member Section



38 3/8" Graphic Support Bar



Your choice of Lumina Light
1, 3, 4, 5, 6, 7, 8, 9, 10, 11, 12 or 13
(1 set of 4)



Top Wings



Bottom Wings



Metal Capitol



Metal Capitol with Capitol Header



KIT K

- 42" Side Pole Section [x3]
- 42" Side Pole Section with Steel Foot [x3]
- 42" Center Pole Section [x4]
- 46" Cross Member Section [x8]
- 36" Legs [x6]
- 38 3/8" Graphic Support Bar [x8]
- Triangle Table Top [x2]
- Rectangle Yable Top
- Corner Mount [x3]
- Joining Bar [x8]
- Lumina Light [1 set of 4]

- Metal Capital [x2]
- Top Wing [x2]
- Bottom Wing [x2]
- Center Header [2 pieces]



KIT L



KIT M

- 42" Side Pole Section [x3]
- 42" Side Pole Section with Steel Foot [x3]
- 42" Center Pole Section [x4]
- 46" Cross Member Section [x8]
- 36" Legs [x2]
- 38 3/8" Graphic Support Bar [x8]
- Rectangle Table Top
- Corner Mount [x1]
- Joining Bar [x8]
- Lumina Light [1 set of 4]
- Metal Capital [x2]

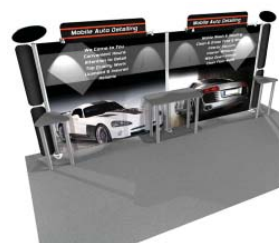
- Top Wing [x2]
- Bottom Wing [x2]
- Center Header [2 pieces]
- Capitol Header [x2]



KIT N

- 42" Side Pole Section [x3]
- 42" Side Pole Section with Steel Foot [x3]
- 42" Center Pole Section [x4]
- 46" Cross Member Section [x8]
- 36" Legs [x6]
- 38 3/8" Graphic Support Bar [x8]
- Triangle Table Top [x2]
- Rectangle Table Top
- Corner Mount [x2]
- Joining Bar [x8]
- Lumina Light [1 set of 4]

- Metal Capital [x2]
- Top Wing [x2]
- Bottom Wing [x2]
- Center Header [2 pieces]
- Capitol Header [x2]



KIT O



KIT P

- 42" Side Pole Section [x3]
- 42" Side Pole Section with Steel Foot [x3]
- 42" Center Pole Section [x4]
- 46" Cross Member Section [x8]
- 38 3/8" Graphic Support Bar [x8]
- Joining Bar [x8]
- Lumina Light [1 set of 4]
- Metal Capitol [x2]
- Top Wing [x2]
- Bottom Wing [x2]
- Center Header [2 pieces]

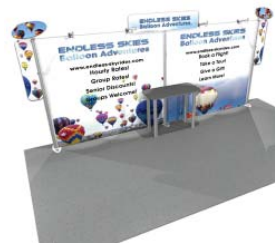
Capitol Header [x2]



KIT Q

- 42" Side Pole Section [x3]
- 42" Side Pole Section with Steel Foot [x3]
- 42" Center Pole Section [x4]
- 46" Cross Member Section [x8]
- 36" Legs [x2]
- 38 3/8" Graphic Support Bar [x8]
- Rectangle Table Top
- Corner Mount
- Joining Bar [x8]
- Lumina Light [1 set of 4]
- Metal Capitol [x2]

Top Wing [x2]
Center Header [2 pieces]
Capitol Header [x2]



KIT R

- 42" Side Pole Section [x3]
- 42" Side Pole Section with Steel Foot [x3]
- 42" Center Pole Section [x4]
- 46" Cross Member Section [x8]
- 36" Legs [x4]
- 38 3/8" Graphic Support Bar [x8]
- Square Table Top [x2]
- Rectangle Table Top
- Corner Mount [x3]
- Joining Bar [x8]
- Lumina Light [1 set of 4]

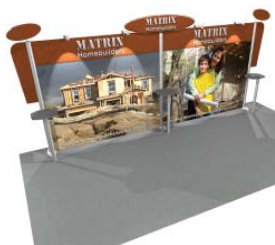
Metal Capital [x2]
Top Wing [x2]
Center Header [2 pieces]
Capitol Header [x2]



KIT S

- 42" Side Pole Section [x3]
- 42" Side Pole Section with Steel Foot [x3]
- 42" Center Pole Section [x4]
- 46" Cross Member Section [x8]
- 36" Legs [x3]
- 38 3/8" Graphic Support Bar [x4]
- Triangle Table Top [x3]
- Corner Mount [x3]

Top Wing [x2]
Center Header [2 pieces]
Capitol Header [x2]



KIT T



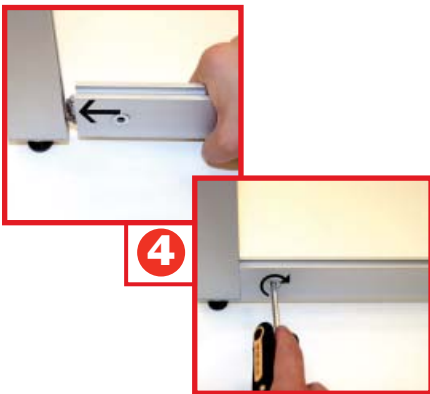
A) Stand the base upright so that the foot points towards you. B) Insert a *corner mount bracket* into the side channel on the side you wish to install the bottom cross member pole and slide it to the appropriate height. C) Put the mount covering onto the *corner mount* and using your fingers twist the appropriate screw half way in.



Position one of the *cross member sections* underneath the *corner mount* as shown, the bottom of the *mount bracket* will fit into the channel on top of the *cross member pole*. Be sure the lock teeth are aligned with the channel on the side pole and push into place.



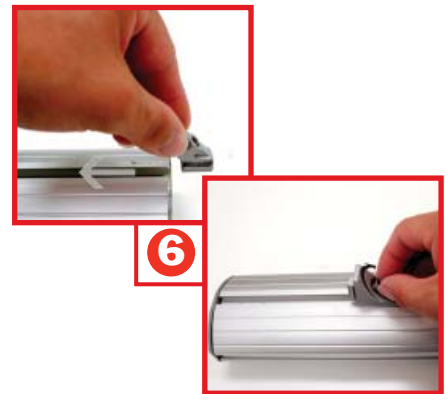
A) Turn the lock screw on the *cross member section* clockwise until secure. B) Turn the *mount screw* clockwise until secure.



A) Stand the bottom center pole section upright so that the magnets face away from the lock screw on the *cross member section*. B) Position the opposite end of the *cross member section*, installed in step 2, and push into place. C) Turn the lock screw clockwise until secure.



Insert a *corner mount bracket* into the front channel of the side pole section. Slide the mount to the bottom of the channel until it sits against the corner mount installed in step 2. The front channel will be on the opposite side as the lock screw on the *cross member pole*.



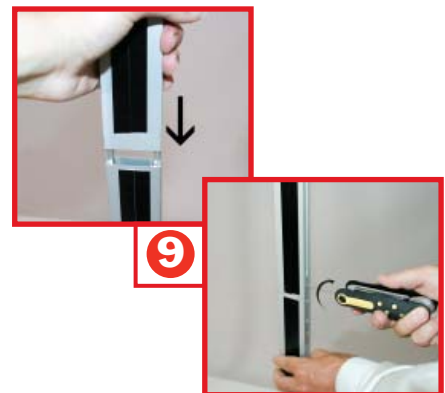
A) Insert a *corner mount bracket* into the side channel, of one of the upper side poles, and slide it to the appropriate height. B) Put the mount covering onto the *corner mount* and using your fingers twist the appropriate screw half way in.



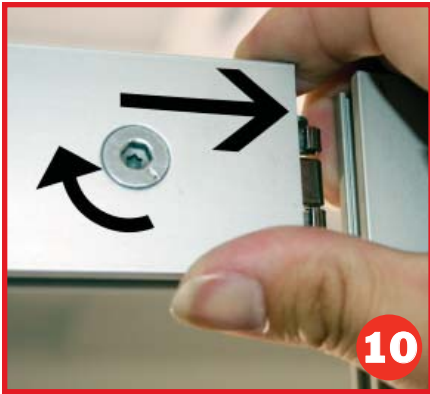
A) Slide the *joining bar* into the channel of the bottom side pole section and align the bar so that the top of the pole is equidistant between the middle two screws. Screw the bar into place, turning clockwise until it is secure. B) Align the bottom of the channels on the upper pole section with the *joining bars*. Slide the pole in place and screw the remaining screws, of the *joining bars*, clockwise until they are secure.



A) Position one of the *cross member section* above the *corner mount* as shown, the top of the *mount bracket* will fit into the channel on the bottom of the *cross member section*. Be sure the lock teeth are aligned with the channel on the center pole and push into place. B) Turn the lock screw on the *cross member section* clockwise until secure. C) Turn the *mount screw* clockwise until secure. D) Repeat steps 1 - 9 for the opposite side of the unit.



A) Slide the *joining bar* into the channel of the bottom center pole section and align the bar so that the top of the pole is equidistant between the middle two screws. Screw the bar into place, turning clockwise until it is secure. B) Align the bottom of the channels on the upper pole section with the *joining bars*. Slide the pole in place and screw the remaining screws, of the *joining bars*, clockwise until they are secure.



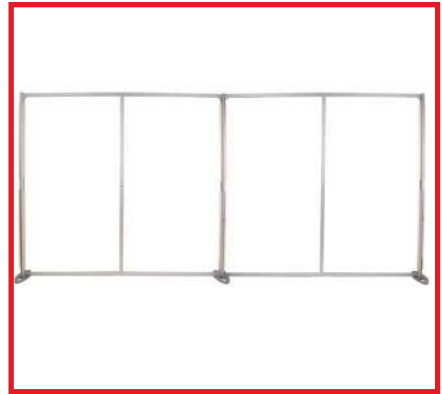
10

A) Push the opposite end of the upper *cross member section*, installed in step 10, into place so that it is flush with the upper center pole section. B) Turn the lock screw clockwise until secure.



11

Repeat steps 1 - 10 for the other half of the frame.



At this point the frame will be fully constructed.



12



A) Set the right section of the center header on top of the upper *cross member section* fitting the lock teeth into the channel. The support bar should be flush with the seam between the respective *cross member section* and the center pole. B) Fit the support clip into the channel.



13

Turn the lock screw clockwise until secure.



14

Position a *graphic support bar* as shown and push into place. The bar should fit comfortably into the channel of the side pole.



15

Install the headers by snapping the bracket into the channel on the pole opposite the *graphic support bar*.



16

Install the metal capitol into the respective side pole cap, located at the top of the side poles, by pushing into place.



17

Install the graphics by lining up the magnets on the back of the graphics with the magnets on the cross member poles, center pole, and graphic support bars. To assure proper alignment smooth the edges of the graphic with you hand.



18



A) Loosen the clamp on the light by turning the knob counterclockwise and install the light as show, turning the knob clockwise until secure. B) Position the *corner mount*, installed in step 6, to the same height as the counter when both feet are firmly on the ground. Put the *mount covering* onto the *corner mount* and using your fingers twist the appropriate screw half way in. Once the counter unit is in place use the installation tool to turn the *mount screw* clockwise until secure. Repeat for the second unit if applicable.